

**Planning Proposal to permit additional permitted industrial uses,
including rural industries, at identified key sites
New England Highway, Muswellbrook (PP-2024-732)**

Local Government Area:		Muswellbrook Shire Council (MSC)
Name of Draft LEP:		Muswellbrook Local Environment Plan 2009 (PP-2024- 732)
Subject Land:		Site 1 - Part Lot 2 DP1095515. Site 2 - Part Lot 2 DP1095515. Site 3 - Part Lot 601 DP1019325, part Lot 34 DP 752486 and part Lot 145 DP 752486.
Land Owner:		AGL Macquarie P/L
Applicant:		AGL Macquarie P/L
Folder Number:		PP-2024-25
Date:		18 November 2024
Authors:		Sharon Pope of Muswellbrook Shire Council Trent Wink Department of Planning, Housing and Infrastructure
Tables:	Table No.	Details
	1	Summary of amendments to MLEP 2009
	2	Assessment of Hunter Regional Plan 2041
	3	Assessment of Muswellbrook Local Strategic Planning Statement 2020 - 2040
	4.	Assessment of Muswellbrook Community Strategic Plan 2022-32
	5.	Assessment of State Environmental Planning Policies
	6.	Assessment of Section 9.1 Directions
	7.	Assessment of other Environmental Effects
Maps:	No.	
	1	Locality and Aerial
	2	Site Identification
	3	Bushfire
	4	a) Zoning b) Key Sites

Attachments:	No.	Details
	1	Evaluation criteria for the delegation of plan making functions.
	2	Bushfire Risk Management Plan
	3	Aboriginal Heritage information Management System (AHIMS) records
	4	Traffic Impact Assessment
	5	Gateway determination

Part 1 – OBJECTIVES OR INTENDED OUTCOMES

The intent of the planning proposal (PP) is to amend *Muswellbrook Local Environmental Plan 2009* (MLEP 2009). The spot rezoning will make industrial uses, including rural industries, permissible with consent on three (3) key sites. A local clause will be introduced to permit the proposed industrial land uses as well as a key sites map, which identifies the three (3) sites (collectively referred to as the site) totalling 1,052,443 m² (105.24 hectares). Land uses being envisaged include solar panel manufacturing, solar panel refurbishment and recycling, green steel production and agricultural produce industries to support surrounding agricultural farms.

The current zoning of SP2 Infrastructure only permits a limited range of uses. This PP also aims to permit ancillary infrastructure in the SP2 zone not already covered and made permissible under *State Environmental Planning Policy (Transport & Infrastructure) 2021*.

Part 2 – EXPLANATION OF PROVISIONS

The intended outcomes will be achieved by amending the MLEP 2009 as follows: -

Amendment Applies to	Explanation of provision
Amend the SP2 Infrastructure land use table	To include “Environmental Protection Works” as a use permitted without consent; To include “Roads” and “Water Storage Facilities” as uses permitted with consent. * It is not necessary to include “Sewage reticulation”, “Sewage treatment plants” and “Water supply systems” (except for the sub term of water storage facility) in the SP2 land use table because these uses are already permitted with consent under the <i>SEPP (Transport & Infrastructure) 2021</i> .
Key Sites Maps – Sheet KYS_009	To create a new map sheet identifying the 3 sites.
Part 7 Additional Local Provisions	To include new local clause to permit “Industry” and “Rural Industry” land uses. Draft Additional Local Provision outlined below.

Table 1 – Summary of MLEP 2009 Amendments

Proposed drafting of local clause under Part 7 – Additional Local Provisions:

“7.11 Development on land associated with part Lot 601 DP1019325, part Lot 2 DP1095515, part Lot 34 DP 752486 and part Lot 145 DP 752486.

(1) The objectives of this clause are as follows:

(a) to facilitate the ongoing transition of existing Power Station Sites from coal fired power station operations to a broader range of employment generation activities which support the renewable energy transition.

(b) to facilitate development that is compatible with or related to the special characteristics of the site and recognises the site constraints and the available infrastructure.

(2) This clause applies to land identified as part Lot 601 DP1019325, part Lot 2 DP1095515, part Lot 34 DP 752486 and part Lot 145 DP 752486 on the Key Sites Map.

(3) Despite clause 2.3, development consent may be granted to development for the purpose of:

Industries; Rural industry

(4) Development consent must not be granted to development on land referred to in subclause (2) unless the consent authority is satisfied that:

a) there are no significant land use conflicts between the proposed development and the land uses conducted on the adjoining parts of the site; and

b) The uses are compatible with or otherwise relate to the special characteristics of the site.

The intent of the additional local provision is to permit a broader range of permissible land uses that are consistent with the underlying objective to facilitate employment generating activities which support the renewable energy transition. The development assessment process will determine the suitability of the proposed development and take into consideration the special characteristics, site constraints and infrastructure requirements.

All other planning controls applying to the site will remain unchanged.

Part 3 – JUSTIFICATION

Section A – Need for the Planning Proposal

3.1 Is the planning proposal a result of any strategic study or report?

The planning proposal is not the result of a strategic study or report. The PP gives effect to Planning Priorities 1-3 in the Muswellbrook Local Strategic Planning Statement dated October 2020 (LSPS). It also aligns with the Hunter Regional Plan 2041, which identifies Liddell/Bayswater as a regionally significant growth area because of its employment generating potential. This is discussed in more detail in Section B, below.

The AGL landholdings, located in Muswellbrook Local Government Area, are primarily zoned SP2 Infrastructure under MLEP 2009. It comprises a coal fired power station, a former coal fired power station that is scheduled for demolition, and ancillary infrastructure, such as ash dams, coal stockpile areas, coal conveyancing equipment, electricity switching yards, and electricity transmission lines.

The former Liddell Power Station (Liddell PS) was initially constructed by the NSW Government owned State Electricity Commission and operated from the early 1970s until its closure in April 2023. AGL has decommissioned the building which has involved isolating hazards, decontaminating the plant and ensuring it is safe and ready for demolition. When the State Significant Development is approved, demolition can commence. On completion of the demolition works, the LPS site will be rehabilitated in line with regulatory requirements.

Bayswater Power Station (Bayswater PS) was also constructed by the State Electricity Commission and has been operating since 1985, along with the Hunter Valley Gas Turbines and a range of infrastructure to support water supply, water management, coal ash management, coal supply, power supply and control systems. Bayswater PS is scheduled to cease generating electricity between 2030 and 2035.

The landholdings provide an opportunity to attract employment generating developments to create jobs for the skilled workforce impacted by the energy transition and the future closure of Bayswater PS and local mines.

3.2 Is the planning proposal the best means of achieving the objectives or intended outcomes, or is there a better way?

Yes. The proposed local clause will permit a broader range of permissible land uses for three (3) identified sites within the much larger AGL landholdings. All future land uses will require the lodgement of a development application, assessed under the EP&A Act and development consent being granted. This is considered consistent with the underlying objective to facilitate employment generating activities which support the renewable energy transition, while the Bayswater PS is still operating. The development assessment process will determine the suitability of the proposed development and take into consideration the special characteristics, site constraints and infrastructure requirements.

Other options considered and not pursued include:

- **Amending Schedule 1, Additional Permitted Uses** to permit the uses identified above. This option is not the preferred option because it does not include objectives that make clear that the intent of the additional permissible uses is to support the renewable energy transition. This option does not provide detailed development control to support the identified land uses and the future development of the land.
- **Amend the SP2 Infrastructure Zone Table to permit Industries with consent.** This option would apply to all land zoned SP2 Infrastructure under MLEP 2009 and has the potential to allow for inappropriate land uses to occur on other sites within the Muswellbrook Local Government Area (LGA). This option also does not provide detailed development control to support the identified land uses and the future development of the land. It is not preferred for these reasons.
- **Split SP2 Infrastructure/SP4 Enterprise zone and mapping the site as an Urban Release Area under Part 6 of the LEP to require a Development Control Plan.** This option was suggested by DPHI but is not preferred for this planning proposal as MLEP 2009 does not currently contain a SP4 Enterprise zone, so it would be inconsistent with Ministerial Direction 1.4, given it would seek to rezone the site to a zone not already in the LEP, and Direction 7.1 given there is not currently a strategy approved by the Planning Secretary to create an employment zone on this site.

Further, Council is intending to seek to use the SP4 zone for several “transition” sites across the Shire, predominantly open cut coal mine sites that are expected to cease operation in the short term. The full range of uses that may be permitted in the SP4 zone is not settled, but would likely include office and light industrial uses, limited residential accommodation, childcare, education establishments, intensive agriculture, local shops and so on, which would be inconsistent with the primary use of the Bayswater Power Station site for electricity generation.

In summary, the proposal is the best means of achieving the objectives and intended outcomes as it provides an opportunity to permit desirable land uses consistent with the underlying objective to facilitate employment generating activities which support the renewable energy transition.

Section B – Relationship to Strategic Planning Framework

4.1 Is the planning proposal consistent with the objectives and actions of the applicable regional or sub-regional strategy (including the Sydney Metropolitan Strategy and exhibited draft strategies)?

Hunter Regional Plan 2041 (HRP)

The PP is consistent with the HRP strategic directions. It implements the objectives to diversify the Hunter's mining, energy and industrial capacity and to plan for other employment generating opportunities and activities in the Liddell and Bayswater power stations.

The Liddell and Bayswater power station site is recognised as a regional significant growth area. The HRP requires place strategy planning be undertaken to investigate employment and environmental outcomes, whilst considering infrastructure capabilities, including water supply. However, the Department recently advised that the Hunter and Central Coast Place Delivery Program, currently implemented through the UDPs, has been reviewed. The place strategy requirement to accompany future planning proposals has been removed and Council should proceed with its local planning pathway with planning proposals informed by proponent prepared site-specific investigations. The Department's Local Planning and Council Support team will continue to provide case management and assist with agency liaison to resolve issues.

In the circumstances, Council will continue to work with AGL to develop a master plan to identify how the land should be developed and constraints managed. An infrastructure strategy and delivery plan is also required in conjunction with the master plan, to determine capacity and infrastructure gaps.

An assessment of the HRP key strategies is outlined the Table 2 below:

Hunter Regional Plan 2041			
<i>Objective</i>	<i>Performance Outcome</i>	<i>Strategy</i>	<i>Alignment</i>
OBJECTIVE 1: Diversify the Hunter's mining, energy and industrial capacity	Any planning proposal or local strategic planning statement that does not comply with a strategy in this objective must demonstrate how the following performance outcomes will still be achieved: 1. Power stations and coal mines facilitate diverse job opportunities on their	Strategy 1.1 Planning proposals for mine or power station sites identified as regionally significant growth areas will be supported by a place strategy which demonstrates how the proposal will: – maximise employment generation or will attract visitors to the region.	The Liddell and Bayswater Regionally Significant Growth Area map (Figure 24) identifies the site as a future "Integrated Industrial energy hub". Council has been advised to proceed with preparing planning proposals informed by proponent prepared site-

	<p>land either during operation or following closure, with land uses responsive to the characteristics of the locality.</p> <p>2. Employment lands provide a variety of employment uses and diversify the employment base.</p> <p>3. Employment lands close to inter-regional links support freight, logistics and industries which benefit from connections to interregional or global markets.</p> <p>4. Employment lands close to renewable energy zones support manufacturing related to renewables and energy intensive industries and clustering of business which supports those activities.</p> <p>5. Circular economy industries and facilities are in appropriate sites.</p> <p>6. New employment lands are serviced, manage biodiversity impacts and are situated to avoid land use conflict.</p> <p>7. Employment lands are retained and safeguarded by limiting the encroachment of sensitive land uses.</p>	<ul style="list-style-type: none"> – make use of voids and/or site infrastructure such as rail loops, hard stand areas, power, water and road access. – support the growth of adjoining industrial areas or settlement areas. – enhance corridors within the landscape such as biodiversity corridors or disused infrastructure corridors. – complement areas with special amenity value such as critical industry clusters, open space, villages and residential areas. – have considered the existing and likely future uses of adjoining land and avoid land use conflict. – align with any specific guidance in the district planning priorities section of this plan. <p>Strategy 1.2 Following completion of the Hunter– Central Coast REZ, local strategic planning should consider:</p> <ul style="list-style-type: none"> – opportunities to leverage new employment in related manufacturing and energy intensive industries that benefit from proximity to the energy infrastructure within the renewable energy zone. – the proximity of sensitive land uses to ensure sensitive land uses do not encroach on activities within the REZ. <p>Strategy 1.3 Local strategic planning should consider:</p> <ul style="list-style-type: none"> – how existing employment land areas, including those that provide urban services, will be retained unless opportunities for urban renewal arise through the relocation of industry. – if there is sufficient supply of vacant, serviced employment land providing capacity for a range of different sized employment enterprises the employment land needs for the local government area and identify flexible planning and development control frameworks to support their 	<p>specific investigations to determine employment and environmental outcomes.</p> <p>The proposed local clause will permit a broader range of permissible land uses for three identified sites within the much larger AGL landholdings. Future development will be required to be consistent with the objective of the local clause to facilitate employment generating activities which support the renewable energy transition and minimise social and economic impacts.</p> <p>Employment opportunities in manufacturing, waste, freight and other industries should assist in providing jobs for the existing skilled workforce impacted by the energy transition and the future closure of Bayswater PS and local mines.</p> <p>It will also provide opportunities for circular economy industrial uses to reuse ash and other products during manufacturing processes by enabling co-location on the Bayswater site.</p> <p>The site offers both rail and highway access, water and infrastructure assets.</p>
--	---	--	---

		<p>growth.</p> <ul style="list-style-type: none"> – opportunities to facilitate growth in logistics, circular economy, new economic enterprises and industries and their supply chains. – the suitability of transport interchanges and bypasses for employment lands in consultation with Transport for NSW. – lands around the interchanges of the M1 Pacific Motorway and Pacific Highway should be used for employment activities that benefit from easy access to key markets such as manufacturing, logistics and warehousing. – the proximity of sensitive land uses and ensure they do not encroach upon these areas. <p>Strategy 1.4 Planning proposals for new employment lands will demonstrate they:</p> <ul style="list-style-type: none"> – are located in areas which will not result in land use conflict. – can be adequately serviced and any biodiversity impacts are manageable. – respond to the employment land needs identified for that local government area. 	
--	--	--	--

Table 2 Assessment of Hunter Regional Plan 2041

4.2 Is the planning proposal consistent with a council's local strategy or other local strategic plan?

The PP gives effect to Planning Priorities 1-3 in the Muswellbrook LSPS as outlined in the Table 3 and implements the economic diversity goal of Muswellbrook Strategic Plan 2022-32 outlined in Table 4 below:

Muswellbrook Shire Local Strategic Planning Statement 2020-2040		
Priority	Detail	Consistency
Planning Priority 1: Our Shire embraces technology and innovation.	Council supports leading edge businesses growing and consolidating in Muswellbrook Shire as a mechanism toward supporting the Shire's transition to broader employment diversification.	The proposal will enable the lodgement of DAs for industrial land uses on the site, assisting with employment diversification opportunities. It will also provide opportunities for industrial uses to beneficially reuse ash and other

Planning Priority 2: We plan for the transition of mine and power station sites before their closure.	Mines and power stations occupy large tracts of land with infrastructure and topography that would be suitable for alternative uses over time, to replace employment opportunities that may not exist in the future.	by-products on the Bayswater site. The site is suitable for various industrial land uses that will provide employment opportunities in the LGA.
Planning Priority 3: The mineral resource and power generation industry is productive, accountable and considerate of surrounding land uses	Coal mining, river sand extraction and quarrying for hard rock and shale are major components of the economy of the Shire. The two coal fired power stations are expected to close long-term, but new power generating activities, such as wind, solar, pumped hydro and biofuels are expected to be commissioned. Groups from the mining, quarrying and agricultural and visitor economy sectors have expressed a desire for certainty on the location of these different activities, enabling more confidence in investment decisions. Many of these activities are classed as State Significant Development (SSD) but Council has a strong role in advocating for appropriate land use planning decisions by the State Agencies.	As above. DA's will be assessed on their merits in accordance with the requirements of the EP&A Act.

Table 3 Assessment of Muswellbrook LSPS 2020-2040

Muswellbrook Shire Council Community Strategic Plan 2022-2032	
Goal	Consistency
Economic prosperity. Strategy 1.2 of this goal is to: <i>"Diversify the economy, facilitate the development of intensive agriculture, innovative manufacturing, health services and other growth industries".</i>	This proposal seeks to make industrial land uses permissible with consent on the site. It will also provide opportunities for innovative industrial manufacturing uses which beneficially reuse ash and other generation by-products during manufacturing processes by enabling co-location on the Bayswater site.

Table 4 Assessment of Muswellbrook Community Strategic Plan 2022-32

4.3 Is the Planning Proposal consistent with any other applicable State and regional studies or strategies?

The proposal is consistent with the following State Plans and Strategies:

- NSW State Plan 2021
- NSW State Infrastructure Strategy 2022-2042
- Future Transport Strategy
- A 20 Year Economic Vision for Regional NSW

4.4 Is the planning proposal consistent with applicable State Environmental Planning Policies?

The PP is consistent with applicable State Environmental Planning Policies as outlined in the Table 5 below:

Assessment of the Planning Proposal against relevant SEPPs			
SEPPs	Applicable	Consistent	Comment
(Biodiversity and Conservation) 2021	No	NA	The proposal itself does not propose to clear vegetation or affect land subject to potential koala habitats, foreshore or waterways, water catchments, or strategic conservation areas. Any future development applications will be assessed in accordance with the requirements of this SEPP.
(Exempt and complying Development Codes) 2008	No	NA	The proposal does not propose any building works or changes to this policy.
(Housing) 2021	No	NA	The proposal does not propose building works or changes to this policy, and no residential uses are proposed to become permissible as part of this proposal.
(Industry and Employment) 2021	No	NA	The proposal does not propose any changes to the planning controls for advertising and signage. The land is not located in the Western Sydney employment area.
No 65 – Design Quality of Residential Apartment Development	No	NA	The proposal does not propose building works or changes to this policy, and no residential uses are proposed to become permissible as part of this proposal.
(Planning Systems) 2021	Yes	Yes	The proposal does not affect the assessment of any future proposed State significant development, State significant infrastructure, Regionally significant development or land subject to a development Delivery Plan. The land is not owned by an Aboriginal Land Council.
(Primary Production) 2021	No	NA	Land subject to the proposal is not primary production or rural development, located on state significant agricultural land, a farm dam and other small-scale and low risk artificial waterbody, a livestock industry, sustainable aquaculture or within the Central Coast plateau area
(Resilience and Hazards) 2021	Yes	Yes	Update this section when information received The site is not located in the coastal zone. If a DA for a hazardous or offensive development is lodged it will be assessed on its merits. The site is not listed on the significantly contaminated land register and is currently used for power station related purposes, being a form of industrial development, and regulated under an environmental protection licence issued by the NSW EPA. A Preliminary Site Investigation (PSI) would be prepared for the Planning Proposal before exhibition, so that the suitability of the site for the proposed use can be assessed. Subject to the outcomes of the PSI, a Detailed Site Investigation Report would be prepared, and any remediation required can be regulated via development

			consent conditions to ensure that the suitability of the site for the specific proposed industrial development.
(Resources and Energy) 2021	No	NA	The proposal is compatible with the surrounding separately approved mining operations which adjoin the Site and does not propose any changes to the controls contained in this SEPP. MSC has recently approved a boundary realignment (DA 2023-130) to allow the transfer of land already approved for mining to Maxwell Ventures. This further protects and recognises its approved use. Consultation will be undertaken with NSW Mining, Exploration and Geosciences as required by the Gateway determination.
(Sustainable Buildings) 2022	No	NA	The proposal does not propose building works or changes to this policy, and the site is not on land zoned for residential purposes.
(Transport and Infrastructure) 2021	Yes	Yes	The proposal does not propose building works or changes to this policy. Future developments made permissible by this planning proposal may require referral to TFNSW depending on the type of development and traffic generation.

Table 5 Assessment of State Environmental Planning Policies

4.5 Is the planning proposal consistent with applicable Ministerial Directions?

An assessment of the PP and its consistency against the applicable Ministerial Directions is provided in the table 6 below:

Compliance with Section 9.1 Directions		
1.1 Implementation of Regional Plans	Consistent	The proposal is consistent with the objectives and actions of the Hunter Regional Plan 2041
1.2 Development of Aboriginal Land Council land	NA	
1.3 Approval and Referral Requirements	Consistent	The proposal does not include any provisions that require additional concurrence, consultation, or referral of development applications to a Minister or public authority and does not identify development as designated development.
1.4 Site Specific Provisions	Consistent	<p>The proposal will amend the LEP to make 'industry' 'Rural Industry' and additional infrastructure related land uses permissible with consent. The Proposal does not require rezoning to a land use that is not in the LEP.</p> <p>The proposal does not seek to include any new land uses that are not already defined in the LEP.</p>
1.4A Exclusion of Development Standards from Variation	NA	
3.1 Conservation Zones	NA	The site does not contain environmentally sensitive areas, land within a conservation zone or identified for environment conservation or protection purposes.
3.2 Heritage Conservation	Consistent	The proposal does not affect existing heritage provisions in the LEP.
4.1 Flooding	NA	<p>There is no flood study available for this site. The site does not adjoin a river, and Lake Liddell is a constructed water body that is kept full by water discharged from Bayswater PS. The Site is not considered to constitute Flood Prone Land. Future DAs lodged over the site will need to address relevant clauses of the LEP and Development Control Plan (DCP) clauses and provisions as they apply to the site and the proposal.</p> <p>The Gateway determination (covering letter dated 13/6/24) approved any potential inconsistency with this Direction on the basis that the land is not considered flood prone and this issue will be further considered at the DA stage.</p>
4.3 Planning for Bushfire Protection	Consistent	<p>The site is mapped as Bushfire Prone Land - Vegetation Category 3.</p> <p>Bushland on the site is fragmented. Grassland is the predominate vegetation type.</p> <p>Future land uses will be subject to different risk profiles and accordingly APZ and BAL requirements.</p> <p>The existing road network has sufficient capacity, ingress and egress to accommodate evacuation, and emergency services vehicles. Key access routes would remain unchanged from those</p>

		<p>approved under previous consents/Bushfire Management Plan.</p> <p>Stored water is available at the site, primarily in storage dams.</p> <p>Consultation will be undertaken with NSW Rural Fire Service (RFS) following receipt of a gateway determination.</p>
4.4 Remediation of Contaminated Land	Consistent	<p>The site is not listed on the significantly contaminated land register but is currently used for power station related purposes, being a form of industrial development, and regulated under an environmental protection licence issued by the NSW EPA.</p> <p>Need to address Direction ie, Council is satisfied etc etc</p> <p>A PSI would be prepared to accompany any future development application so that the consent authority can consider the suitability of the site for the proposed use. Subject to the outcomes of the PSI, a Detailed Site Investigation Report would be prepared, and any remediation required can be regulated via development consent conditions to ensure that the suitability of the site for the specific proposed industrial development.</p>
4.5 Acid Sulfate Soils	NA	
4.6 Mine Subsidence and Unstable Land	NA	<p>A small portion of land adjacent to the southern eastern end of Lake Liddell owned by AGL is located within a Mine Subsidence District but does not apply to the identified sites.</p>
5.1 Integrating Land Use and Transport	Consistent	<p>The Direction does not strictly apply to this PP. It aims to broaden the permissible industrial uses on land zoned SP2 Infrastructure to facilitate employment generating activities which support the renewable energy transition.</p> <p>The PP is considered consistent with the underlying principles of Improving Transport Choice – Guidelines for planning and development (DUAP 2001), and The Right Place for Business and Services – Planning Policy (DUAP 2001) by creating employment opportunities on a site, suitability located on the outskirts of Muswellbrook, with direct access to the New England Highway. It should positive contribute to employment opportunities for the skilled workforce impacted by the closure of the power stations and local mining operations.</p>
8.1 Mining, Petroleum Production and Extractive Industries	Inconsistency	<p>The proposal is compatible with the surrounding mining operations.</p> <p>The proposal may be inconsistent with this direction as it will broaden permissible land uses, which could hypothetically restrict the future mining of coal resources on the site. However, it should be noted that the site already contains significant infrastructure which restricts/limit mining opportunities if made permissible. The PP doesn't propose to change the mining prohibition.</p>

		Consultation will be undertaken with NSW Mining, Exploration and Geoscience as required by the Gateway determination before requesting the Planning Secretary's approval of this inconsistency.
--	--	---

Table 6 Assessment of Section 9.1 Directions

Section C – Environmental, Social and Economic Impact

5.1 Is there any likelihood that critical habitat or threatened species, populations or ecological communities, or their habitats, will be adversely affected as a result of the proposal?

The identified sites are located within highly disturbed landscape areas and do not contain any large expanses of intact native vegetation. The land is considered to be of a low ecological value.

No areas of land that the Minister for Energy and Environment has declared as an area of outstanding biodiversity value in accordance with section 3.1 of the *Biodiversity Conservation Act 2016* (the 'BC Act') would be affected.

5.2 Are there any other likely environmental effects as a result of the planning proposal and how are they proposed to be managed

An assessment of other environmental effects and how it will be managed is provided in Table 7, below.

Environmental Impact	Comment
Bush Fire	<p>Sites 1 and 2 are currently managed as active operational areas of the BPS and are regulated by the specific Hazard Management Plans contained in Attachment 2 Site 3 is part of the now decommissioned LPS and contains limited vegetation and is mapped as Vegetation Category 3. Vegetation on this site is controlled by slashing/weed spraying. Ten-metre-wide fire breaks along the inside highway boundary fence.</p> <p>The Bushfire Risk Management Plan is provided as Attachment 2. Consultation will be undertaken with NSW Rural Fire Service (RFS) as required by the Gateway determination.</p>
Hydrology	<p>There has been no recorded flooding of this area and as such no mapping. Any future development application would require an assessment of the impacts on the proposal on hydrology, including a Flood Impact Assessment and Stormwater Management Plan where required based on the scale of development proposed.</p>
Scenic and culturally significant landscapes	<p>The site is located within an area dominated by mining and power generation. The landscape is heavily impacted by industrial activity and large-scale infrastructure associated with the power stations. Agricultural clearing for the purposes of grazing is also present within and surrounding the AGL landholding.</p> <p>There are limited sensitive receivers or social infrastructure in the locality. The nearest sensitive receiver to any of the sites is located over 4km north-east of Site 3. However, the western section of Site 3 is visible from the New England Highway.</p> <p>Visual impacts are likely to be negligible given the separation between the site and other land uses and topographic screening. Visual impacts would be assessed as part of future development applications including via a Visual Impact Assessment where required. Additional tree planting adjoining the New England Highway, in addition to appropriate colour/material selection for future buildings</p>

	on Site 3 will reduce visual impact when viewed from the Highway, Lake Liddell, and the Liddell Coal Mine lease area.
Biodiversity	Any future DA will be required to address the <i>Environment Protection and Biodiversity Conservation Act 1999</i> , the BC Act, LEP and relevant controls in the DCP relating to biodiversity.
Heritage	<p>There are no State Heritage or locally listed items on the site.</p> <p>Aboriginal Heritage information Management System (AHIMS) searches undertaken on 20 February 2024 reveal 18 Aboriginal sites recorded in or near the site. No Aboriginal places have been declared in or near the site. The AHIMS records are included as Attachment 3. Assessments of the impacts of any specific development proposed would be undertaken as part of any future development applications for the site.</p> <p>Aboriginal heritage impact permits would be obtained under the National Parks and Wildlife Act 1974 (NSW) if required for any future development. As an additional safeguard, Council normally conditions compliance with the unexpected finds procedures if any aboriginal artefacts are uncovered.</p>
Access and Transport	<p>The AGL landholdings are connected to the surrounding public road network via a purpose-built access road and grade-separated interchange to and from the New England Highway. Each of the 3 site areas are currently serviced by internal gravel roads within the AGL landholding.</p> <p>A Traffic Assessment (TA) has been submitted to support the preparation of the proposal and assess the extent to which the public road network can accommodate the additional vehicle activity which is expected to be generated from industrial land uses within the site. The TA has identified the capacity and road network performance of existing traffic conditions and assessed the available capacity of the New England Highway to accommodate the additional traffic envisaged by the amendment of LEP so as to permit industrial development on the site at least in the short term.</p> <p>The TA confirmed that high level assessment based on large format industrial development and associated office space indicates that in the order of 22 hectares of land could be developed in the short term at the AGL landholding without any significant impact or need for upgrade on the New England Highway and existing road network.</p> <p>Whilst this proposal seeks to amend the LEP to make industrial uses permissible on approximately 105 hectares of land, this land is not all developable (e.g. roads, and other uses that do not constitute Gross Floor Area). It is noted that once more defined proposals are determined, further traffic analysis and assessment may result in less trips generated than those presented in the TA.</p> <p>Upgrades to the road network, potentially including additional travel lanes on the New England Highway, south of the site, would also support a further increase in the developable yield of the Energy Hub.</p>
Services	<p>The site is distant from the towns of Muswellbrook and Singleton and currently operates without access to a reticulated water or sewage system. At various times approx. 1000 people have worked at the Liddell and Bayswater PS sites. It is intended that this self-sufficient approach will continue as the uses on the site transition. Upgrades to existing services if required, will be confirmed and assessed at the DA stage.</p> <p>Water is extracted from the Hunter River and treated. Potable water is treated on site sites water treatment chemist that the water on site is treated in accordance with the Australian Drinking Water Guideline, 2011 (ADWG) and NSW Health Private Water Supply Guidelines.</p>

Noise	Background local noise environment is impacted by surrounding land uses including power generation, coal mining, livestock grazing, and transport related impacts associated with the Main North Railway Line and the New England Highway. Any future development application would be assessed on its merits in relation to acoustic impacts.
Contamination	Update before exhibition The additional uses would be classified as commercial/industrial from a land use perspective under relevant contamination guidelines, in line with the current power station use of the site. Any future development application will be required to provide an assessment of the specific change in use proposed against the provisions of <i>State Environmental Planning Policy (Resilience and Hazards) 2021</i> to confirm that the site is suitable for the specific form of industrial land use proposed and that any remediation required will be carried out prior to any new use commencing in line with any development consent conditions which are imposed on any development consent granted.

Table 7 Assessment of other Environmental Effects

5.3 How has the planning proposal adequately addressed any social and economic effects?

The PP should have a positive social and economic impact by providing employment opportunities in manufacturing, waste, freight and other industries for the existing skilled workforce impacted by the energy transition and the future planned closure of Bayswater PS between 2030 and 2035.

The amendment will enable compatible additional uses to occur and support the ongoing clean energy transition and an integrated industrial Energy Hub as identified in the Hunter Regional Plan 2041.

Section D – Local, State and Commonwealth Interests

6.1 Is there adequate public infrastructure for the planning proposal

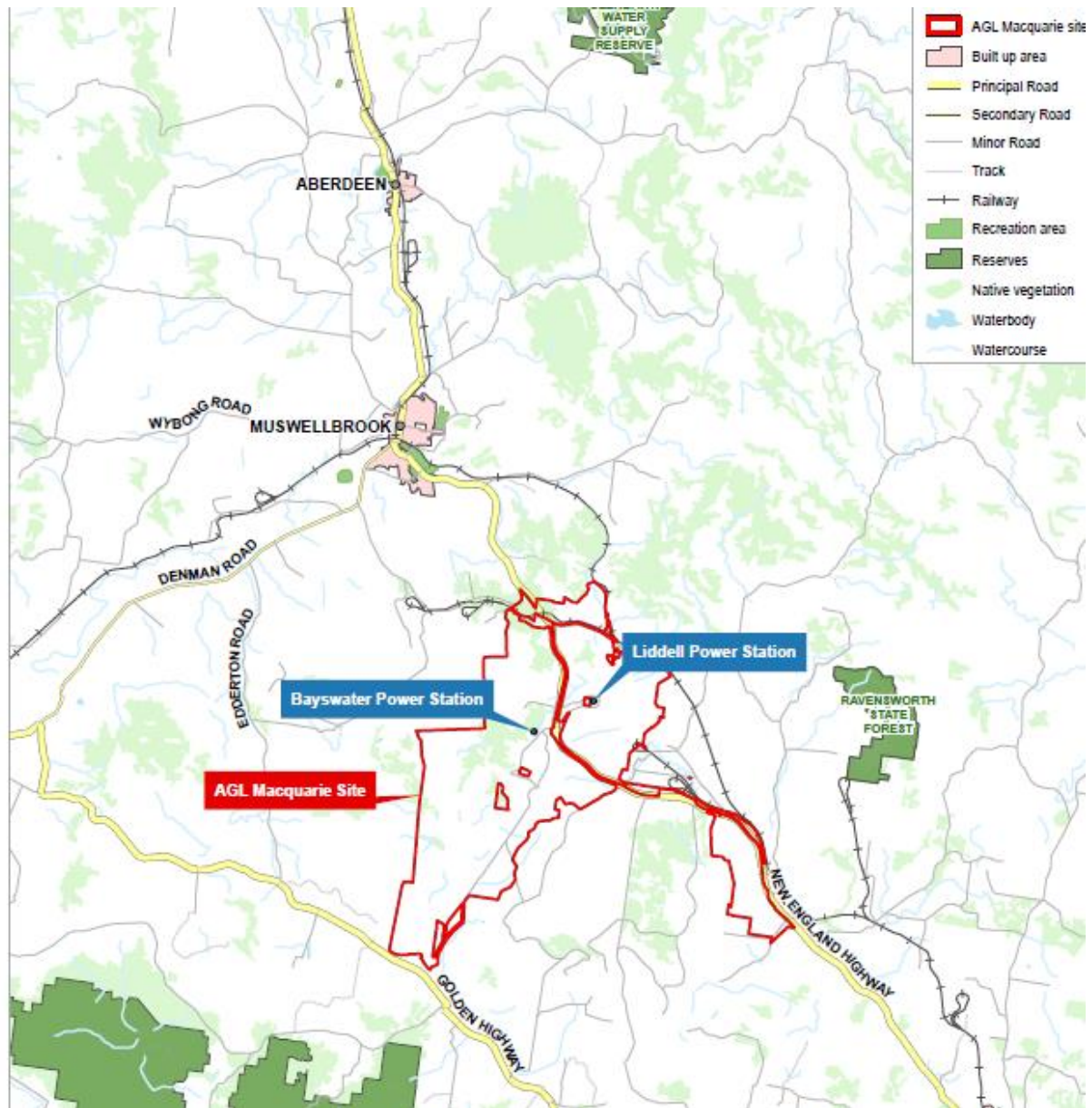
Yes. The proposal is not likely to require any changes to the delivery of public infrastructure to the land. The site is in an established power station site and benefits from access to a range of existing facilities and services, including utilities.

6.2 What are the views of State and Commonwealth public authorities consulted in accordance with the Gateway determination?

An update to this section of the proposal will occur following consultation with relevant State and Commonwealth public authorities in accordance with the Gateway determination.

Part 4 – MAPPING

Map 1 – Locality and Aerial





<p>Paper Size ISO A4</p> <p>0 250 500 750 1,000</p> <p>Meters</p> <p>Map Projection: Transverse Mercator Horizontal Datum: GDA2020 Grid: GDA2020 MGA Zone 56</p>		<p>AGL Broader Employment Transition Area Planning Proposal</p> <p>Site Map</p>	<p>Project No. 12624330 Revision No. A Date 23/02/2024</p>
<p>FIGURE 1</p>			<p></p>

g:\dwg\hwa\2024\hwa\2024\12624330\02\Map\hwa\2024\12624330_Proposal\02_G08_Proposal.apr
 Plotted on 23 Feb 2024 - 3:41

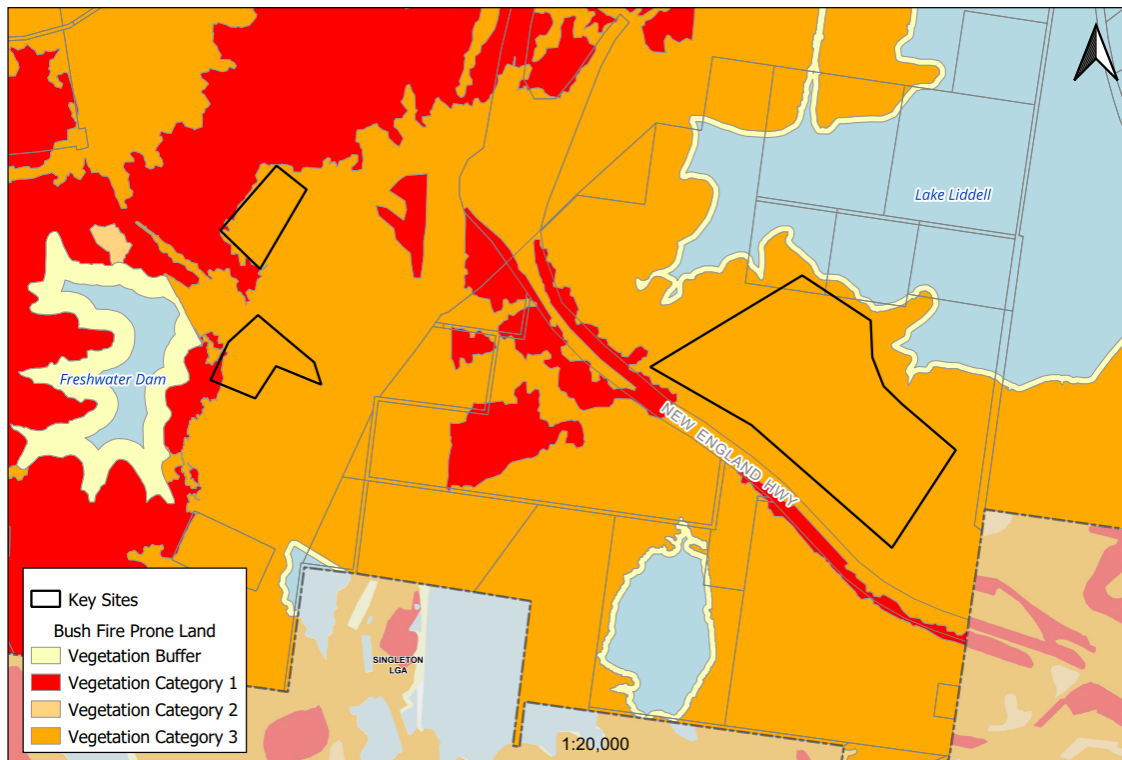
Data source: swmap.com.au. Created by: hwa\paul2

Map 2 – Site Identification



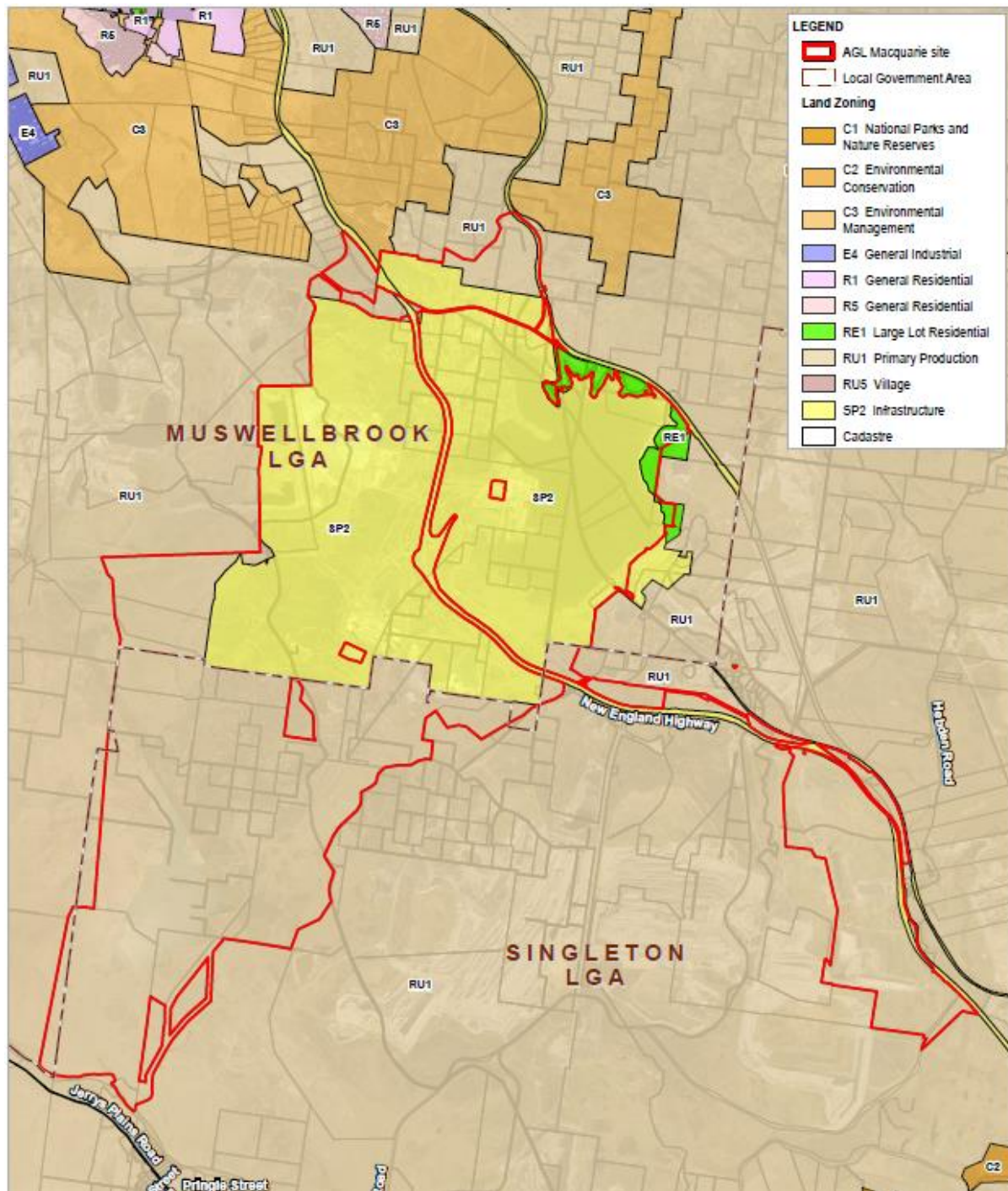


Map 3 – Bush Fire

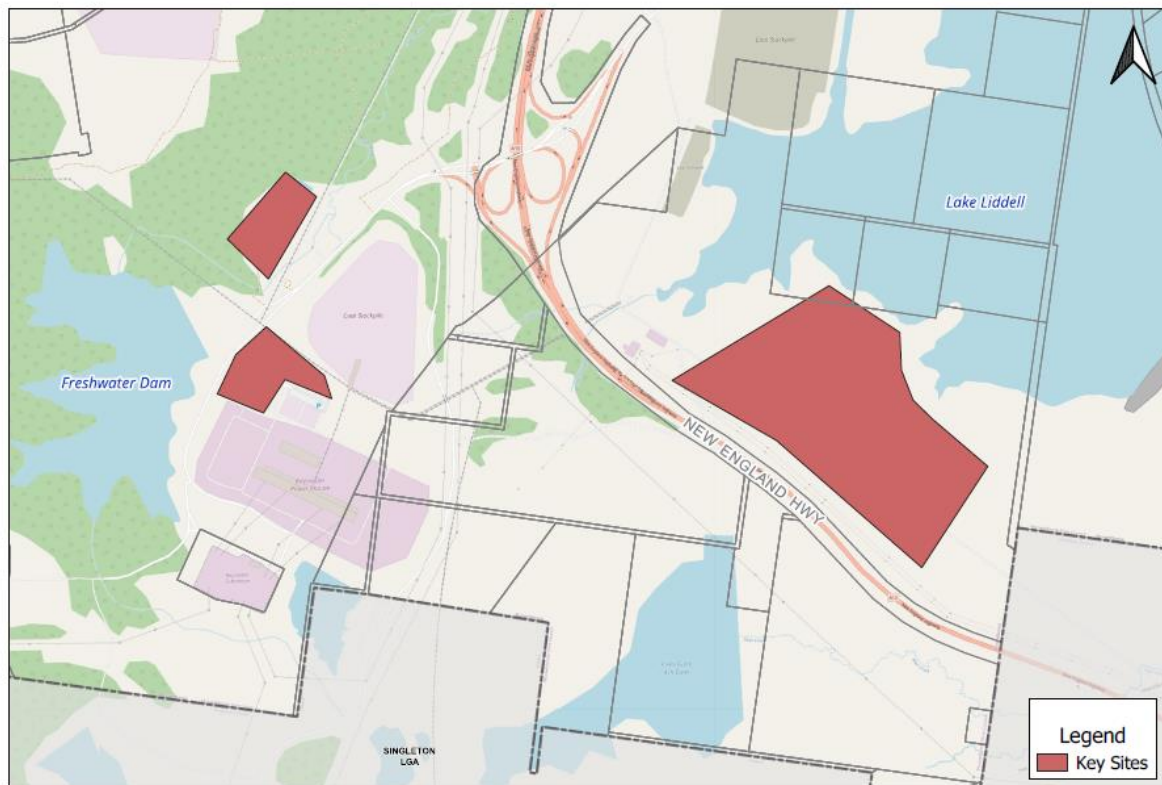


Map 4 - Muswellbrook LEP 2009 - Land Zoning Map Sheet (LZN-009)

(a) Current Land Zoning – SP2 Infrastructure



b) Proposed Key Sites map



Part 5 – COMMUNITY CONSULTATION

The Gateway determination requires the planning proposal to be public exhibited for a minimum of 20 working days.

The planning proposal is categorised as a “standard” LEP amendment. The exhibition is required to comply with the notice requirements and the specifications for material that must be made publicly available along with planning proposals as identified in the *Local Environmental Plan Making Guidelines* (Department of Planning and Environment, 2021).

Part 6 – PROJECT TIMELINE

Action	Timeframe
Gateway Determination issued	13/06/2024
Anticipated timeframe for completion of required technical information	02/12/2024
Public exhibition (commencement and completion dates)	09/12/2024 – 24/01/2025
Timeframe for government agency consultation	09/12/2024 – 17/01/2025
Date of Public hearing (if required)	
Consideration of submissions	Feb 2025
Approval of any Ministers S9.1 Direction inconsistencies	March 2025
Report to Council to finalise planning proposal	March/April 2025
Date RPA will make Plan (if delegated)	May 2025
Date RPA will forward to the Department for notification (if not delegated)	

Council intends to exercise its functions of the local plan-making authority under section 3.36(2) of the EP&A Act provided it satisfies the following requirements:

- (a) the planning proposal authority has satisfied all the conditions of the gateway determination;
- (b) the planning proposal is consistent with applicable directions of the Minister under section 9.1 of the EP&A Act or the Secretary has agreed that any inconsistencies are justified; and
- (c) there are no outstanding written objections from public authorities.

Attachment 1

Evaluation Criteria for the Issuing of an Authorisation

New England Highway, Muswellbrook

Evaluation criteria for the issuing of an Authorisation

(Note – where the matter is identified as relevant and the requirement has not been met, council is to attach information to explain why the matter has not been addressed)	Council response		Department assessment	
	Y/N	Not Relevant	Agree	Disagree
Is the planning proposal consistent with the Standard Instrument Order, 2006?	Y			
Does the planning proposal contain an adequate explanation of the intent, objectives, and intended outcome of the proposed amendment?	Y			
Are appropriate maps included to identify the location of the site and the intent of the amendment?	Y			
Does the planning proposal contain detail related to proposed consultation?	Y			
Is the planning proposal compatible with an endorsed regional or sub-regional planning strategy or a local strategy endorsed by the Secretary?	Y			
Does the planning proposal adequately address any consistency with all relevant S9.1 Planning Directions?	Y			
Is the planning proposal consistent with all relevant State Environmental Planning Policies (SEPPs)?	Y			
Minor Mapping Error Amendments				
Does the planning proposal seek to address a minor mapping error and contain all appropriate maps that clearly identify the error and the manner in which the error will be addressed?		√		
Heritage LEPs				
Does the planning proposal seek to add or remove a local heritage item and is it supported by a strategy/study endorsed by the Heritage Office?	N			
Does the planning proposal include another form of endorsement or support from the Heritage Office if there is no supporting strategy/study?	N			
Does the planning proposal potentially impact on an item of State Heritage Significance and if so, have the views of the Heritage Office been obtained?	N			
Reclassifications				
Is there an associated spot rezoning with the reclassification?		√		
If yes to the above, is the rezoning consistent with an endorsed Plan of management (POM) or strategy?		√		
Is the planning proposal proposed to rectify an anomaly in a classification?		√		
Will the planning proposal be consistent with an adopted POM or other strategy related to the site?		√		

Has Council confirmed whether there are any trusts, estates, interests, dedications, conditions, restrictions or covenants on the public land and included a copy of the title with the planning proposal?		√		
Has council confirmed that there will be no change or extinguishment of interests and that the proposal does not require the Governor's approval?		√		
Has the council identified that it will exhibit the planning proposal in accordance with the Department's Practice Note regarding <i>classification and reclassification of public land through a local environmental plan and Best Practice Guideline for LEPs and Council Land</i> ?		√		
Has council acknowledged in its planning proposal that a Public Hearing will be required and agreed to hold one as part of its documentation?		√		
Spot Rezoning				
Will the planning proposal result in a loss of development potential for the site (i.e. reduced FSR or building height) that is not supported by an endorsed strategy?	N			
Is the rezoning intended to address an anomaly that has been identified following the conversion of a principal LEP into a Standard Instrument LEP format?	N			
Will the planning proposal deal with a previously deferred matter in an existing LEP and if so, does it provide enough information to explain how the issue that lead to the deferral has been addressed?	N			
If yes, does the planning proposal contain sufficient documented justification to enable the matter to proceed?		√		
Does the planning proposal create an exception to a mapped development standard?	N			
Section 3.22 matters				
Does the proposed instrument <ul style="list-style-type: none"> a) Correct an obvious error in the principal instrument consisting of a misdescription, the inconsistent numbering of provision, a wrong cross-reference, a spelling error, a grammatical mistake, the insertion of obviously missing words, the removal of obviously unnecessary words or a formatting error? b) Address matter in the principal instrument that are of a consequential, transitional, machinery or other minor nature? or c) Deal with matters that do not warrant compliance with the conditions precedent for the making of the instrument because they will not have any significant adverse impact on the environment or adjoining land? (Note – the Minister/GSC (or Delegate) will need to form an Opinion under section 3.22 of the Act in order for a matter in this category to proceed).		√		

Attachment 2
